

水理計測のパイオニア

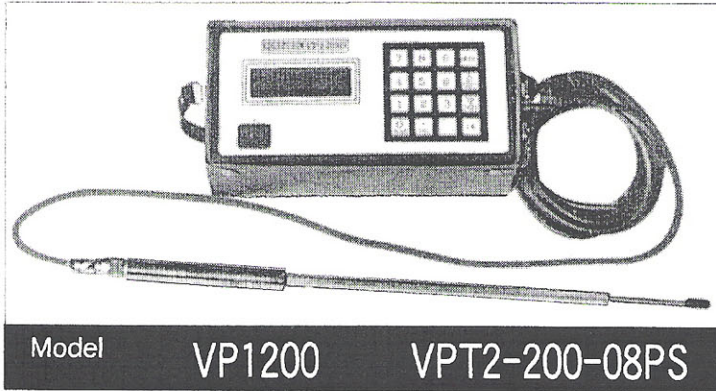
KENEK

Portable, Data logger built-in Electromagnetic Current meter

Model

VP1200

VPT2-200-08PS



Model

VP1200

VPT2-200-08PS

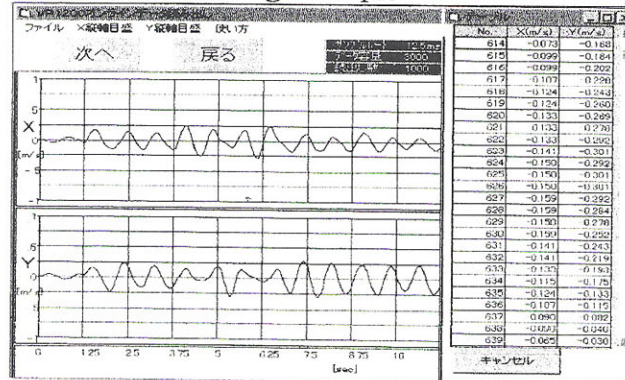
Display of measuring mode 1

```
dist=00.0  avr=01s  
dePth   X     Y  
0.33  -0.061 -0.093  
0.33  -0.061 -0.095
```

Display of measuring mode 2

```
< moni >  avr=01s  
X= -0.061m/s (R1)  
Y= -0.085m/s (R4)  
[START] [MODE]
```

Real time measuring example



1. Flow rate measurement of Micro flow speed to High flow speed of X, Y.
2 components are possible and can be obtained flow direction.
2. Simple measurement of direct reading of Display. Data storage measurement of keep the device depth or distance with the flow speed data.
Continuous measuring method of real time transfer to the P.C.
3. Store the flow rate data with distance, device depth or time to the Memory.
Easy to processing by P.C.
4. Able to use extra Detector in case of occur trouble.
(Compatibility of Detector)
5. High accurate measurement is always by adjust most suitable sensitivity automatically according to the flow speed.
6. Process the bulk sampling data to average calculation accurately by computer.
7. Store the measured time with flow speed data simultaneously.
8. Easy to use on the field even in rain weather.

[Standard specifications]

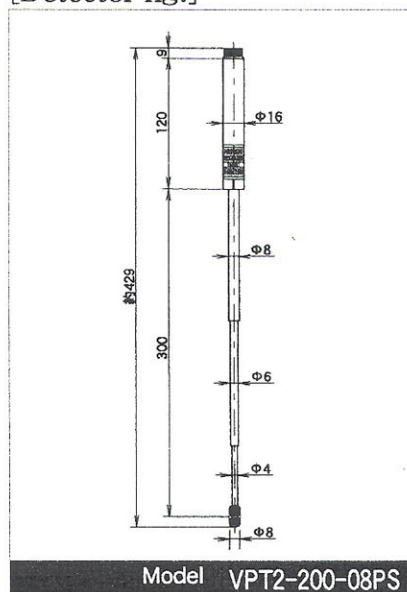
Main unit model : VP1200 / Detector unit model : VPT2-200-08PS (Vertical rod type)

Measuring direction	2 axis 4 directions
Measuring range	0~±2m/s
Measuring accuracy	±0.01 m/s (0~±0.5m/s), ±0.02 m/s (±0.5m/s~±1m/s) ±0.04 m/s (±1m/s~±2 m/s)
Noise	within ±0.005m/s (Flow velocity converted value at static water.)
Average time	1, 5, 10, 20, 40, 60 sec. (Average continuous monitoring function for 1 sec. is available.)
Display	LCD (4 lines 20 letters)
Data storage	Approx. 12,000 data (Horizontal line distance, Device depth, Flow velocity, Average time&Time)
Calendar	(Built-in calendar clock for Year, Month, Day, Hour, Min.)
Output	Real time transfer, keep drip the data of each sampring and transfer to P.C.
Auto power save	Without operate the key for 3 min. (Except during the continuous monitoring function.)
Power source	Built-in battery : Continuous use time about 8 hrs. : Charging time about 10 hrs. (full charged) AC adaptor : 100Vac ±10V 50Hz or 60Hz about 7VA (Conbined use of charger) Need to designate of power souce.
Dimensions	215 ^W × 100 ^H × 70 ^D mm
Weight	Approx. 1.3 kg
Ambient atmosphere	0~+50℃ 80%

[Standard accessories]

Main unit model : VP1200	
AC adaptor	1pc
P.C.connecting cable	1pc
Carrying case	1pc
Data transfer software	1pc
Instruction manual	1bk
Storage case	1pc
Detector unit model : VPT2-200-08PS	
Vertical rod type detector	1pc
Connecting cable (3m)	1pc
Data sheet	1bk

[Detector fig.]



Specifications subject change without notice.

CAT.No.99607

KENEK Corporation

2-8-1 Musashino Akishima-city Tokyo 196-0021 Japan
Tel : 042-544-1011 Fax : 042-544-4748